

CONCEAL-ALARM SERIES

FAFX Standard & Normal Power (NP) Fixture Head

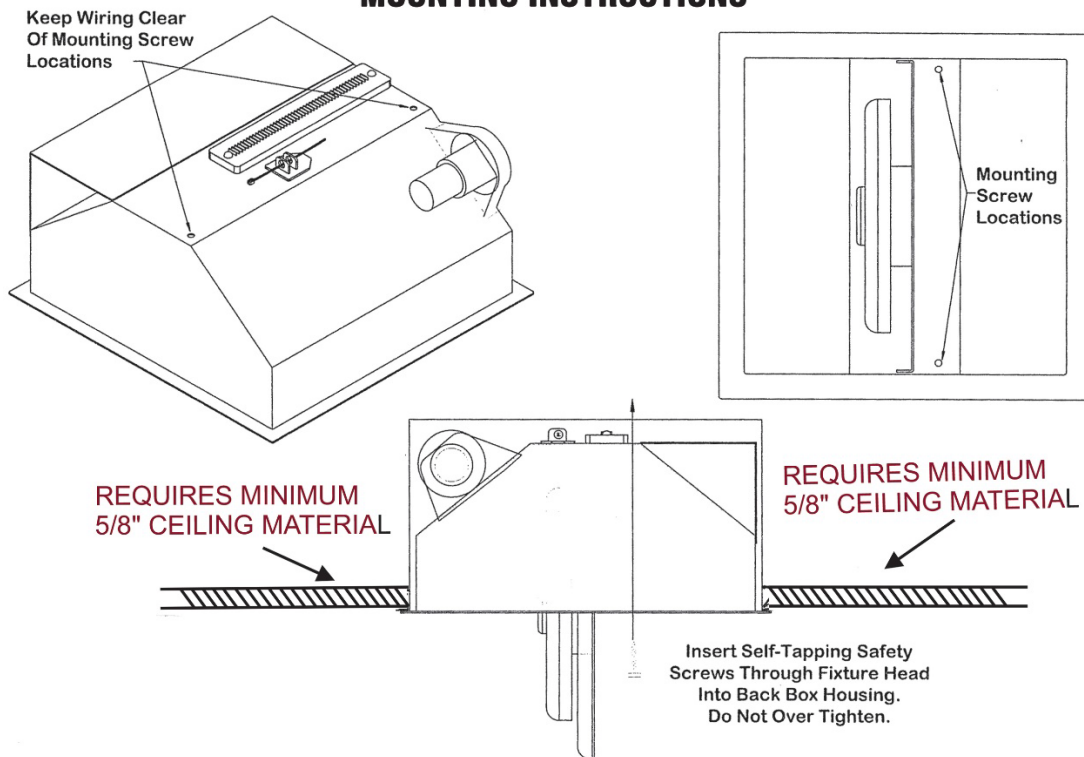


ETL Listed to UL standards UL1971, UL1480, UL464

INSTALLATION INSTRUCTIONS

READ THIS FIRST

MOUNTING INSTRUCTIONS





www.Concealite.com

202 Elk Street, PO Box 160
Elkton, SD 57026
Customer Service: (605) 542-4444

If there is not a minimum of 5/8" ceiling material available for installation, then **STOP** ... this product cannot be installed.



POWER WARNING!

To avoid fire, shock/electrocution, or injury ... **TURN OFF POWER** at circuit breaker or fuse and test to ensure that power is off before wiring. Remove and discard the packaging materials.



IMPORTANT SAFEGUARDS

Read and Follow All Safety Instructions

- ✓ DO NOT use outdoors.
- ✓ Do not let power cords touch hot surfaces.
- ✓ Do not mount units where they will be exposed to direct sunlight, radiators, gas or electric heaters.
- ✓ Equipment should be mounted in locations and at height where unauthorized personnel will not readily subject it to tampering.
- ✓ The use of accessory equipment not recommended by the manufacturer may cause an unsafe condition.
- ✓ Do not use this equipment for other than intended use.
- ✓ Qualified service personnel should perform servicing of this equipment.

Failure to follow published installation instructions or any modifications to the product may damage the unit and will void the warranty.

BEGIN INSTALLATION

1. Wire unit into your rough-in wiring. A temporary suspension hanger is provided to aid in wiring, if needed, as shown in **Figure 1**.

2. Grasp spring arm and pull down until it catches on the edge of the box. (The installer should wear appropriate hand protection to protect against sharp edges.) See **Figures 2 and 3**.

3. Repeat Step #2 with other spring arm.

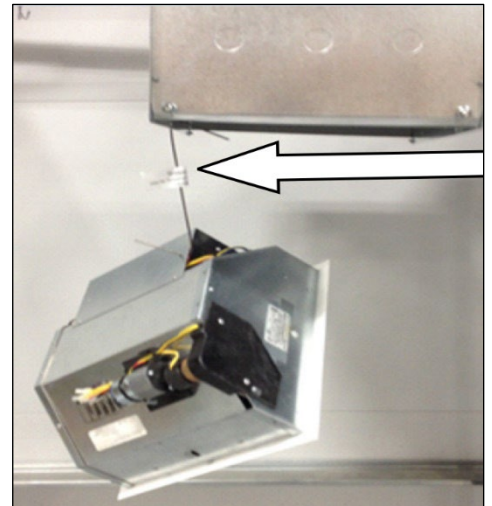


Figure 1

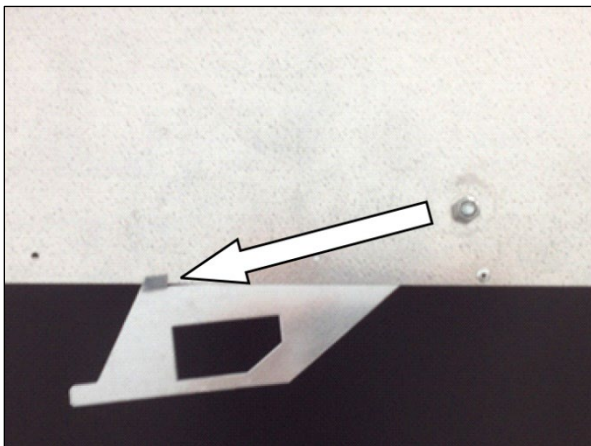


Figure 3



Figure 2

4. Place fixture between spring arms and engage tab on fixture head with slot on spring arms, as shown in **Figure 4**.
5. Grasp fixture head by opposite corners and pull away from back box, slightly, to disengage spring arms from edge of back box. *(When installing or removing fixture head, grasp and pull by the CORNERS ONLY.)* See **Figures 5**.
6. Lower fixture head into back box and adjust to desired fit. See **Figures 6**.

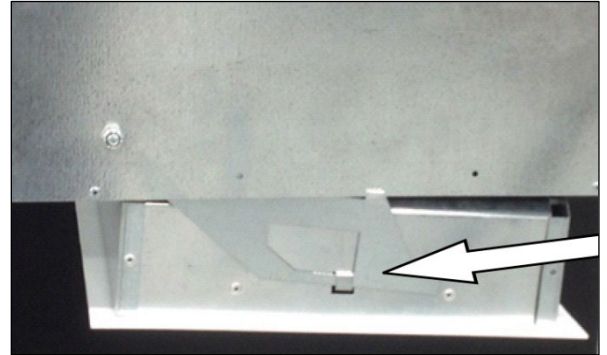


Figure 4

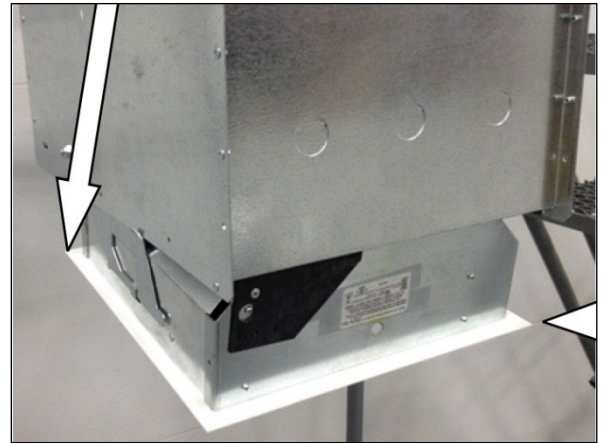


Figure 5

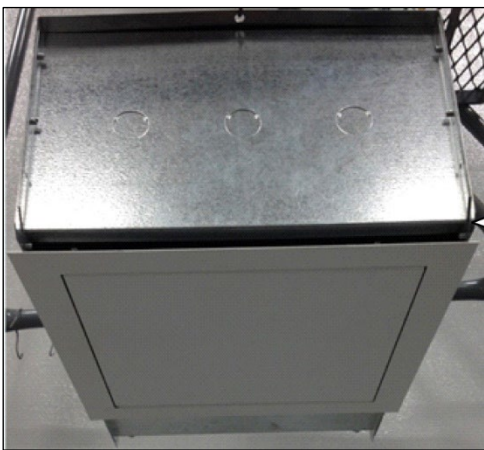
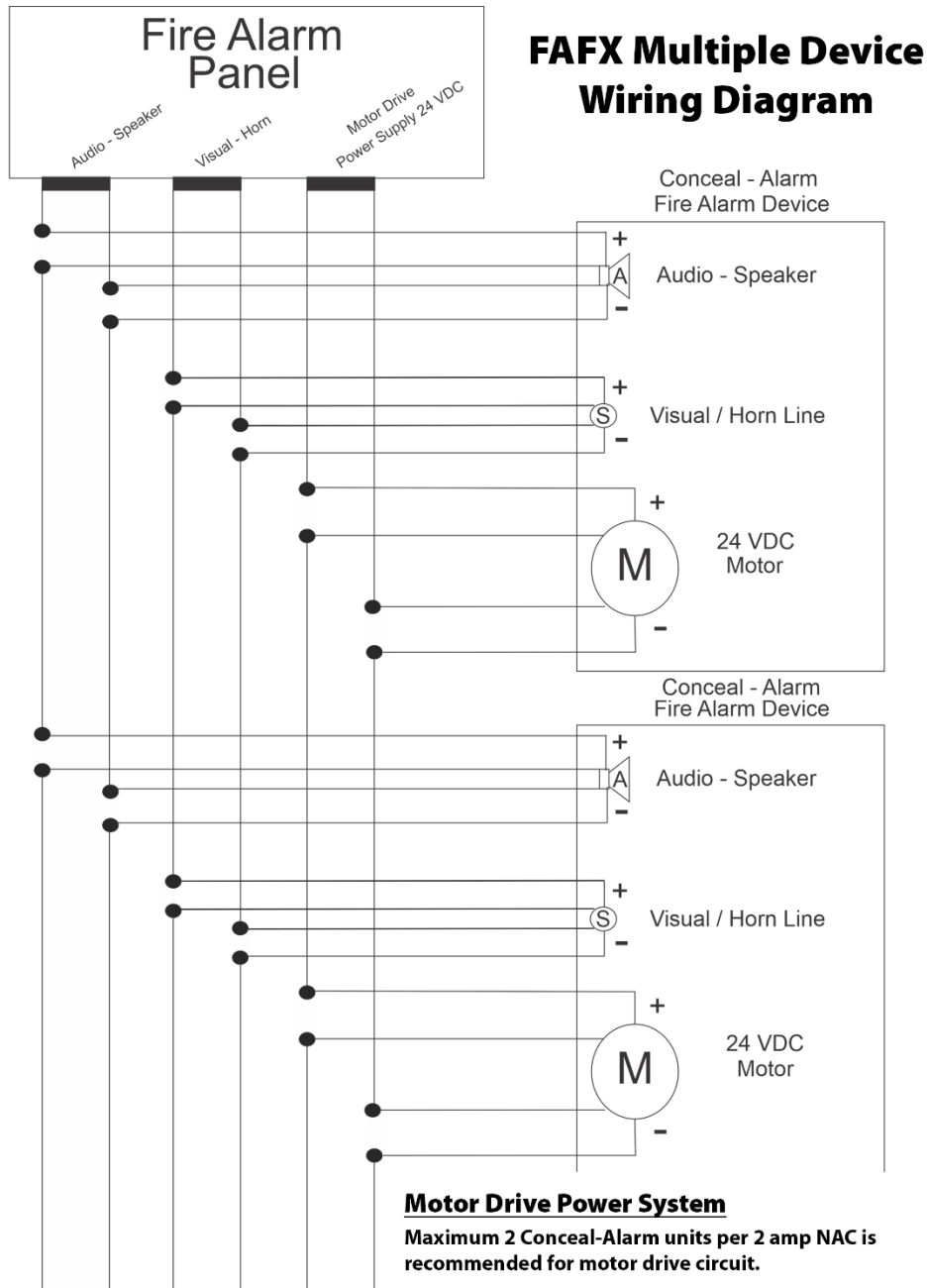


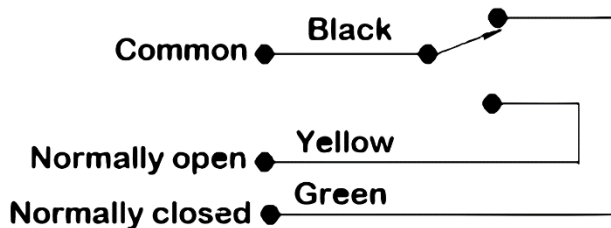
Figure 6

Wiring Diagrams



NOTE: Route to fire alarm control system appliance branch circuit power supply to be powered.

Conceal-Alarm Unit Door Position Supervisory System



NOTE: Door position Supervisory Limit Switch is shown in normal mode (closed-door position). Contacts reverse position when in alarm mode (open-door position).

Fire Alarm Branch Circuits

Please choose the appropriate wires to attach to the leads provided from the fire alarm panel. All units will utilize a minimum 18 ga Red & Black for the motor. Use a minimum 22 ga Red & Black for a strobe or horn/strobe. Use a minimum 22 ga Yellow & Green for a speaker only, and a minimum 22 ga for a speaker/strobe.

After completing the wiring connections and installing the door assembly, the branch circuit power should be activated. The Concealite Conceal-Alarm unit, along with the alarm appliance, is to be tested as a complete fire alarm control system.



www.Concealite.com

202 Elk Street, PO Box 160
Elkton, SD 57026
Customer Service: (605) 542-4444

Technical Data

OPERATION CYCLES

Standard Alarm Mode Power

When activated, the signaling appliance begins operation, the building fire alarm mode power operates the Conceal-Alarm door drive system, moving the signaling appliance into the extended alarm mode position. The door is held in the alarm mode position until the fire alarm panel alarm mode is deactivated.

Upon resetting of the building fire alarm mode power to the non-alarm (normal mode), the door automatically returns to the door closed position.

Normal Power (NP) Option

When activated, the signaling appliance begins operation. The Conceal-Alarm's rotating door automatically rotates 180 degrees, moving the signaling appliance into the extended alarm mode position. Simultaneously de-energizing the normal power supply which maintains the door in the closed-door position.

Upon resetting of the building fire alarm mode power to the non-alarm (normal mode), normal power returns the door to the closed-door position. The door drive system remains energized in the non-alarm mode (normal mode) which maintains the door in the closed-door position.

WIRING NEEDS

Conceal-Alarm units use standard wiring practices, in comparison to any other alarm system. No additional wiring is necessary.

APPLIANCE APPLICATION

Conceal-Alarm comes with factory-fitted Cooper Wheelock UL Listed fire alarm appliances, i.e., speaker, speaker strobes, horns, and horn/strobe combination units, that operate with any fire system.

SPEAKER SETTINGS

Position	25V	70V
A	2 Watt	
B	1 Watt	
C	1/2 Watt	
D	1/4 Watt	2 Watt
E	1/8 Watt	1 Watt
F		1/2 Watt
G		1/4 Watt
H		1/8 Watt

STROBES

Strobes are available in wall and ceiling mount. Candela rating must be specified prior to manufacture. Due to concerns that strobe lights flashing at various times in the same area can trigger health problems, the Conceal-Alarm units are compatible with standard fire system synchronous modules, which cause the strobes to pulse at the same time.

HORNS

The horn portion of the appliance can be set to provide either Continuous Horn or Code 3 Horn. The sound output can be set for High (HI) or Low (LO) dBA. Conceal-Alarm units with the horn feature are shipped with the default settings from the appliance manufacturer, unless otherwise requested.

SPEAKERS

Speakers may operate with a public address system for use by the fire department, as well as automated messages during emergency situations.

BACK BOX APPLICATIONS

The Conceal-Alarm Series products can be installed in various back boxes depending on the specific requirements, as below:

FA-900	New Construction
FA-900-RB	Retrofit Applications
FAFX	New Construction
FAFX-RB	Retrofit Applications
FA-100	New Construction
FA-100-RB	Retrofit Applications

FINISH

The standard Conceal-Alarm trim and door are white powder coat. Please contact the factory for custom finish options.



www.Concealite.com

202 Elk Street, PO Box 160
Elkton, SD 57026
Customer Service: (605) 542-4444

Technical Data (continued)

ELECTRICAL REQUIREMENTS

The table below will assist in planning voltage requirements for fire alarm systems:

Model	Voltage	Current Draw
FA	16VDC	600
FA	24VDC	600
FA	33VDC	600
FA	16 vFWR	600
FA	24 vFWR	600
FA	33 vFWR	600

To determine total voltage requirements, select the proper current draw for the Conceal-Alarm from the table above and add the current draw requirements specified by the manufacturer of the appliance to be used within the Conceal-Alarm fixture.

DRAW REQUIREMENTS

Current draw requirements are available on the product cut sheet or on the website of the device manufacturer:

www.cooperwheelock.com

CANDELA SETTINGS

Wall: 15-30-75-110-135-185 for SSPK-HCD 135 or 185

Ceiling: 15-30-75-95-115 or 177 for SSPK-HCD 115 or 177



www.Concealite.com

202 Elk Street, PO Box 160
Elkton, SD 57026
Customer Service: (605) 542-4444

Warranty

All Concealite fixtures are tested and are guaranteed to be free from defective materials and workmanship for a period of three years (3) from date of shipment, under normal operations and proper use. Correction of all defects shall be by replacement or repair (at our discretion) and shall constitute fulfillment of all manufacturer's obligations. We will not allow any charge for labor, materials, etc. that does not have our written approval before the work has begun. Damage incurred in handling, or in transit, is not covered. Any other warranty, expressed or implied, is hereby void. Modifications to the product or failure to follow these installation instructions will void the warranty.

Save These Instructions